

- Back**
- o Flat Cable Connectors SEK
  - o *har-mik®*
  - o D-Sub
  - o InduCom

---

- **Applications**

---

## Product details

---

**09 67 037 5601**  
**D-Sub - S cable connector**

|                       |                                   |
|-----------------------|-----------------------------------|
| Gender                | Male connector                    |
| Termination           | Crimp                             |
| Number of contacts    | 37                                |
| Flange                | through hole 3.1 mm               |
| Shell                 | tinned metal shell with dimples   |
| Material              | PBTP                              |
| Contact configuration | contacts must be order separately |
| RoHS compliant        | Yes                               |

**Inquiry**

### Available Downloads

| Title       | Format |                          |
|-------------|--------|--------------------------|
| Data sheet  | PDF    | <a href="#">download</a> |
| CAD data 2D | DXF    | <a href="#">download</a> |

### Product news

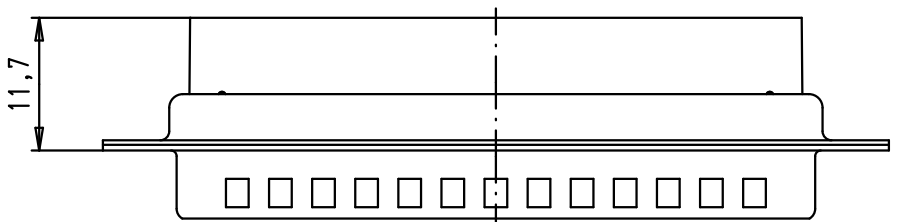
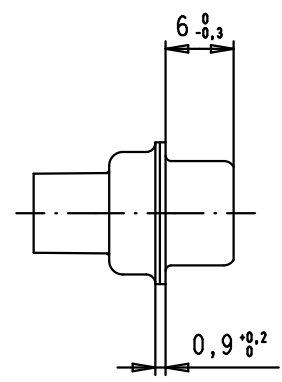
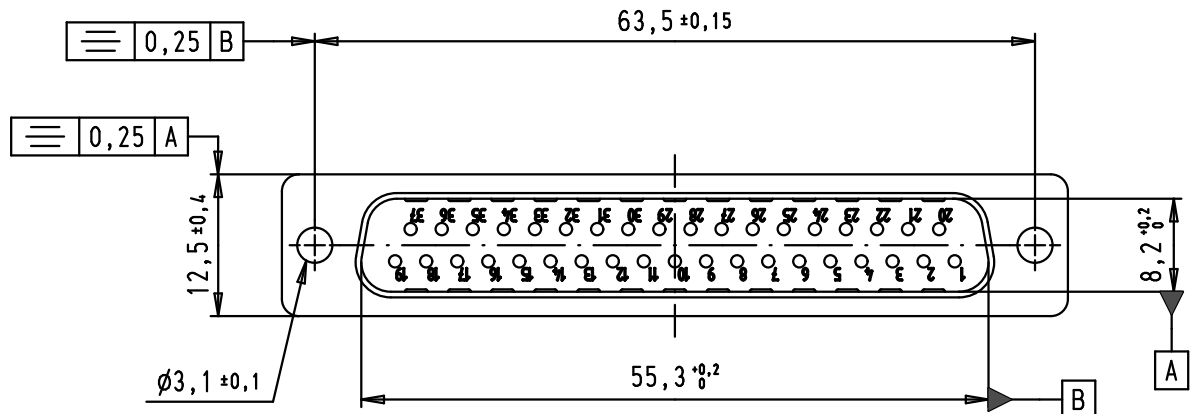
5

4

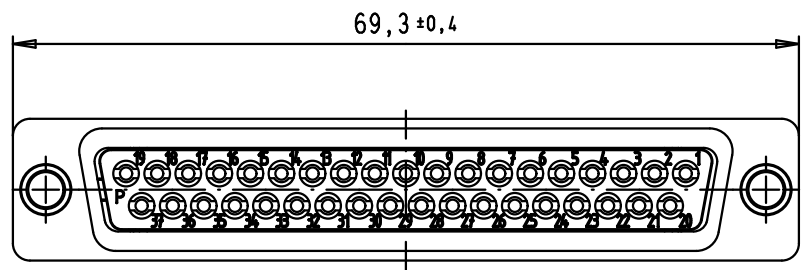
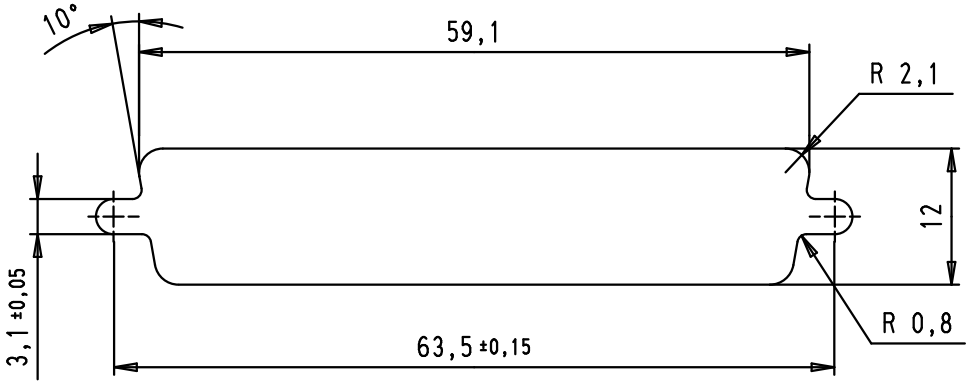
3



2

1



Panel cut out



| Mod.  | Dot.     | Name | Dot.                          | Name     | <br>All Dim. in mm<br>Orig. Size DIN A 4 | D-Sub, male, straight, 37 poles,<br>for crimp contacts AWG 20-24,<br>tin plated shell with dimples | Maßstab/<br>Scale |             |
|-------|----------|------|-------------------------------|----------|---|--|-------------------|-------------|
| 34784 | 14/02/08 | PK   | Detail.                       | 09/04/02 |   |  | CV                | 1,5:1       |
| 33106 | 22/09/05 | JMDR | Insp.                         |          |   |  |                   |             |
| 31571 | 12/11/03 | SH   | Stand.                        |          |   |  |                   |             |
| 31526 | 31/07/03 | TCP  | HARTING EURL<br>F-95972 Paris |          |   |               | TB 09 67 037 5601 | Blatt/ Page |
| 29768 | 09/04/02 | CV   |                               |          |   |  |                   | 1 / 2       |
|       |          |      |                               |          |   |  |                   | Sub.        |

D  
C  
B  
A